

INTERIOR  
DESIGN

**PORT-  
FOLIO**

DAWSON COLLEGE

SAVANNAH WHITE  
SELECTED WORK



# ABOUT

My name is Savannah, and I'm often described as an outgoing, social person who thrives on connecting with people from all walks of life. From a young age, I've been drawn to the artistic side of the world, and over time, I've discovered a deep passion for design. This passion has been shaped not only by exploring various art forms, but also through travel—where I've seen the essence of different cultures reflected in their interiors. I'm equally inspired by people themselves, and how the spaces they create are powerful extensions of their identities.

With a keen eye for aesthetics and a naturally observant nature, I think design is more than just beautiful spaces. It's about forging connections—with cultures and individuals, & hearing the stories they'd like to share. I'm inspired by the opportunity to collaborate with others, continuously grow my skill set, and design environments that aren't just lived in—but truly experienced.

This portfolio highlights a few of my favorite school projects over the years.



01

RESIDENTIAL

The Mirage Residencies

PG 01 - 12

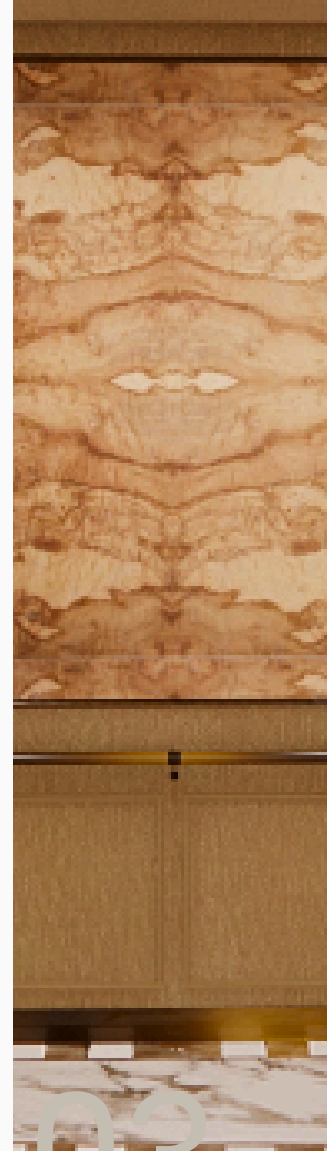


02

OFFICE

Agora Law Firm

PG 13 - 16



03

CONSTRUCTION DOCUMENTS

Elevator Drawings

PG 17 - 18



04

RECREATIONAL

Neptunes Veil

PG 19 - 24

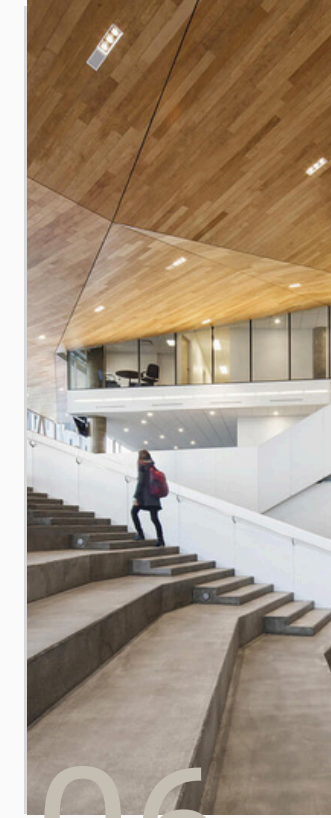


05

COMMUNITY CENTER

Linq.

PG's 25 - 28

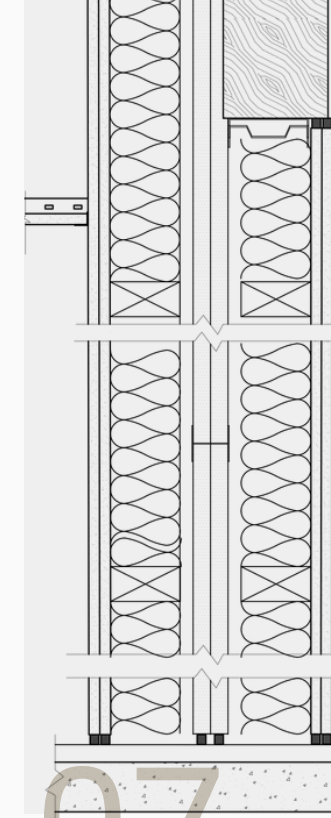


06

CONSTRUCTION DOCUMENTS

ETS Stairs - Pavillion

PG's 29 - 30



07

CONSTRUCTION DOCUMENTS

STC & Wall Ratings

PG's 29 - 30

# TABLE OF CONTENTS

01

THE MIRAGE  
RESIDENCIES  
RESIDENTIAL  
PROJECT

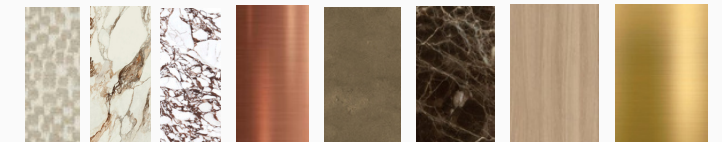
A luxury condo facility spanning across 7 floors in the heart of downtown Montreal.

We are committed to creating Montreal’s premier destination for sophisticated condominiums—residences that truly reflect the individuality and lifestyle of those who call them home. Our vision is to seamlessly merge the elegance of luxury living with the warmth and comfort of home. Inside, residents will feel an intimate connection to their personal space; outside, they will discover a vibrant community, enriched by thoughtfully curated amenities.



Design Approach

This project has the opportunity to breathe new life into the historic Herald Building - home to printing the Montreal Herald Newspaper dating back to the 1920's. Therefore we are dedicated to honoring its legacy, and spirit of the art deco era in which it flourished in. The design will embrace a modern aesthetic, thoughtfully intertwined with art deco parallels, and complemented by natural textures to create a timeless, sophisticated living environment.





- R**
  - Facilities**
  - G1. Rooftop Terraces
  - G2. Rooftop Pool Facility
  - G3. Indoor Lounge Area
  - G4. Private Entertainment Spaces
  - Condo Units**
  - E1. 3 Bedroom Condo Unit - Rooftop Terrace - Floor 3/3 (2)
  - F1. 1 Bedroom Penthouse - Rooftop Terrace 2/2
  - E3. 4 Bedroom Penthouse Unit - Rooftop Terrace (3/3)
- 7**
  - Condo Units**
  - E1. 3 Bedroom Condo Unit w/ Cinema Room - Floor 2/3 (2)
  - F1. 1 Bedroom Penthouse Unit (2)
  - E3. 4 Bedroom Penthouse Unit - Floor (2/3) (1)
- 6**
  - Condo Units**
  - E1. 3 Bedroom Condo Unit w/ Cinema Room - Floor 1/3 (2)
  - E2. 1 Bedroom Penthouse Unit (1)
  - E3. 4 Bedroom Penthouse Unit - Floor 1/3 (1)
- 5**
  - Condo Units**
  - D1. 3 Bedroom Condos (2)
  - Facilities**
  - C3. Wine Cellar - Floor 2/2
  - D3. Gym Facility
  - D4. Cold Plunge/ Sauna/ Steamroom Circuit
- 4**
  - Condo Units**
  - C1. 1 Bedroom Condos (3)
  - C2. 2 Bedroom Condos (2)
  - Facilities**
  - C3. Wine Cellar - Floor 1/2
- 3**
  - Condo Units**
  - D1. 1 Bedroom Condos (3)
  - D2. 2 Bedroom Condos (2)
- 2**
  - Condo Units**
  - B1. 1 Bedroom Condos (3)
  - B2. 2 Bedroom Condos (2)
- G**
  - Front of House**
  - A1. Lobby Area
  - A2. Bistro/Cafe
  - A3. Concierge
  - A4. Dry Cleaners
  - A5. Bike Storage Facility
  - A6. Mail Room
  - Back of House**
  - A7. Security Office
  - A8. Building Manager

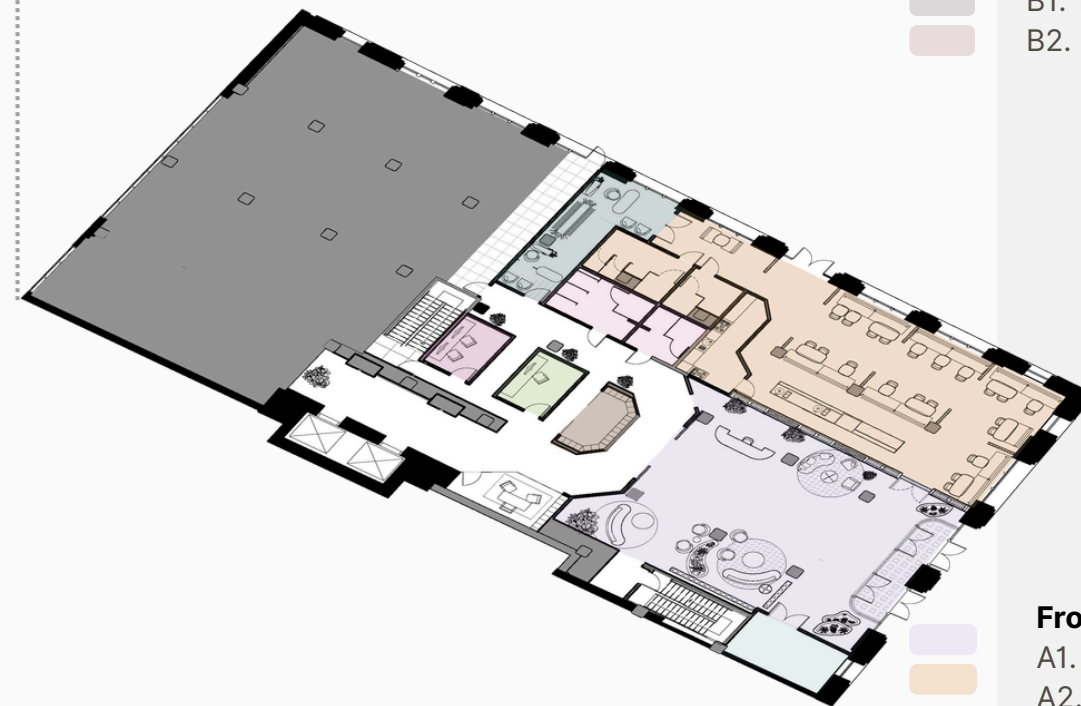


2



- Condo Units**
- B1. 1 Bedroom Condos (3)
  - B2. 2 Bedroom Condos (2)

1



- Front of House**
- A1. Lobby Area
  - A2. Bistro/Cafe
  - A3. Concierge
  - A4. Dry Cleaners
  - A5. Bike Storage Facility
  - A6. Mail Room
- Back of House**
- A7. Security Office
  - A8. Building Manager

4



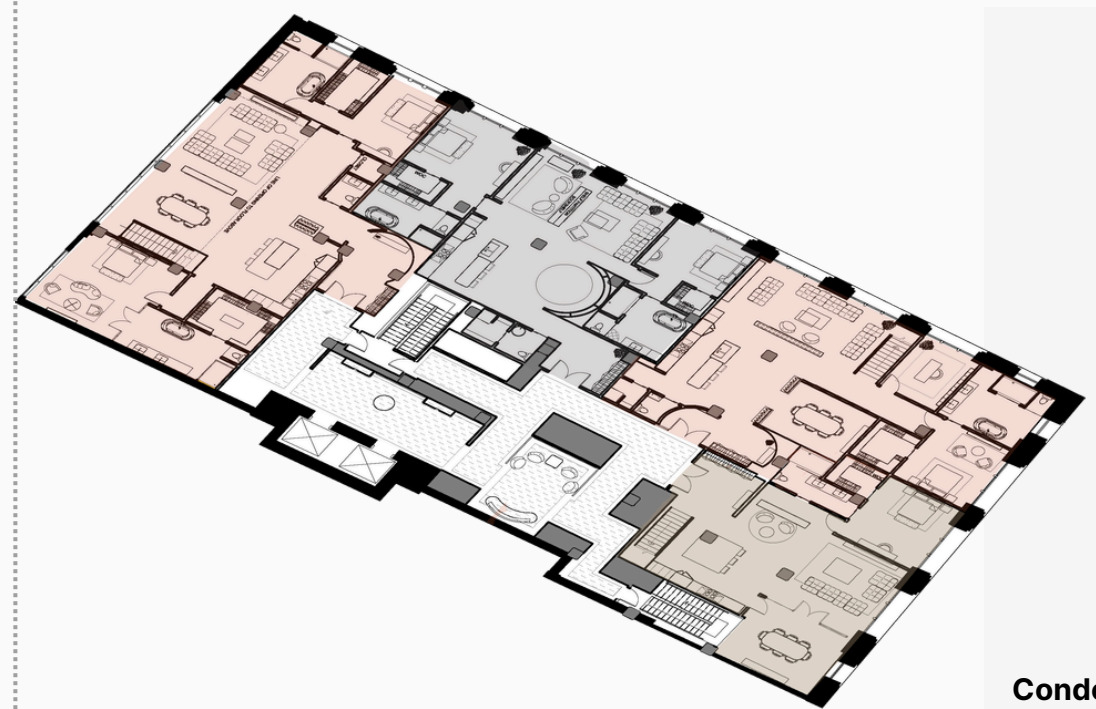
- Condo Units**
- C1. 1 Bedroom Condos (3)
  - C2. 2 Bedroom Condos (2)
- Facilities**
- C3. Wine Cellar - Floor 1/2

3



- Condo Units**
- B1. 1 Bedroom Condos (3)
  - B2. 2 Bedroom Condos (2)

6



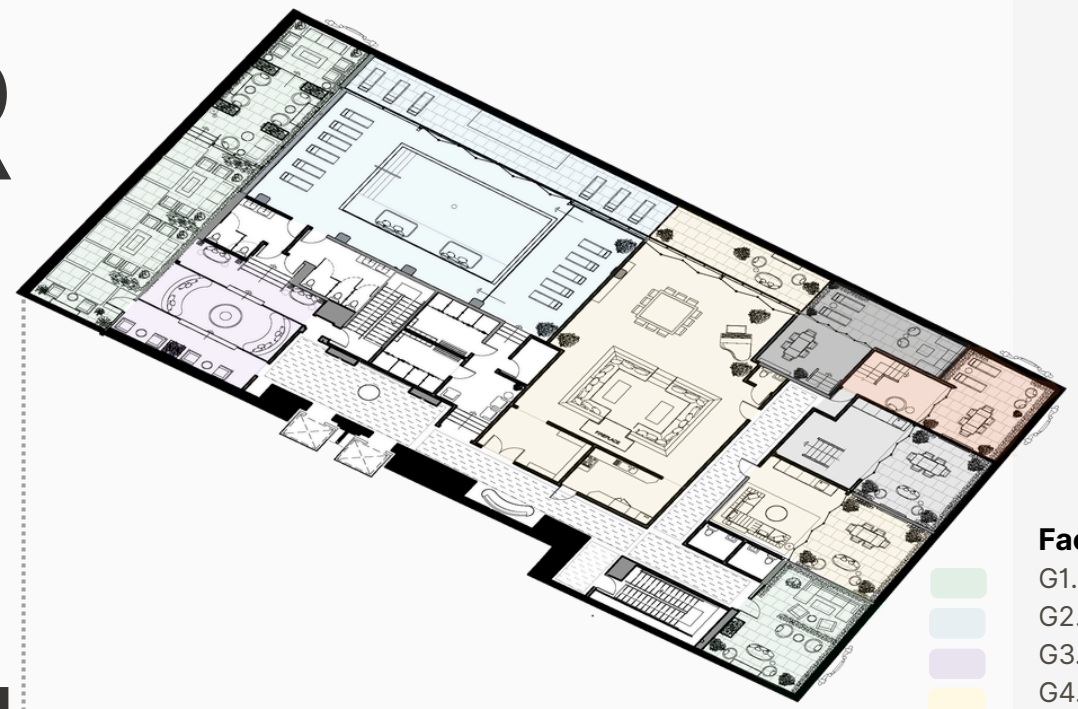
- Condo Units**
- E1. 3 Bedroom Condo Unit w/ Cinema Room - Floor 1/3 (2)
  - E2. 1 Bedroom Penthouse Unit (1)
  - E3. 4 Bedroom Penthouse Unit - Floor 1/3 (1)

5



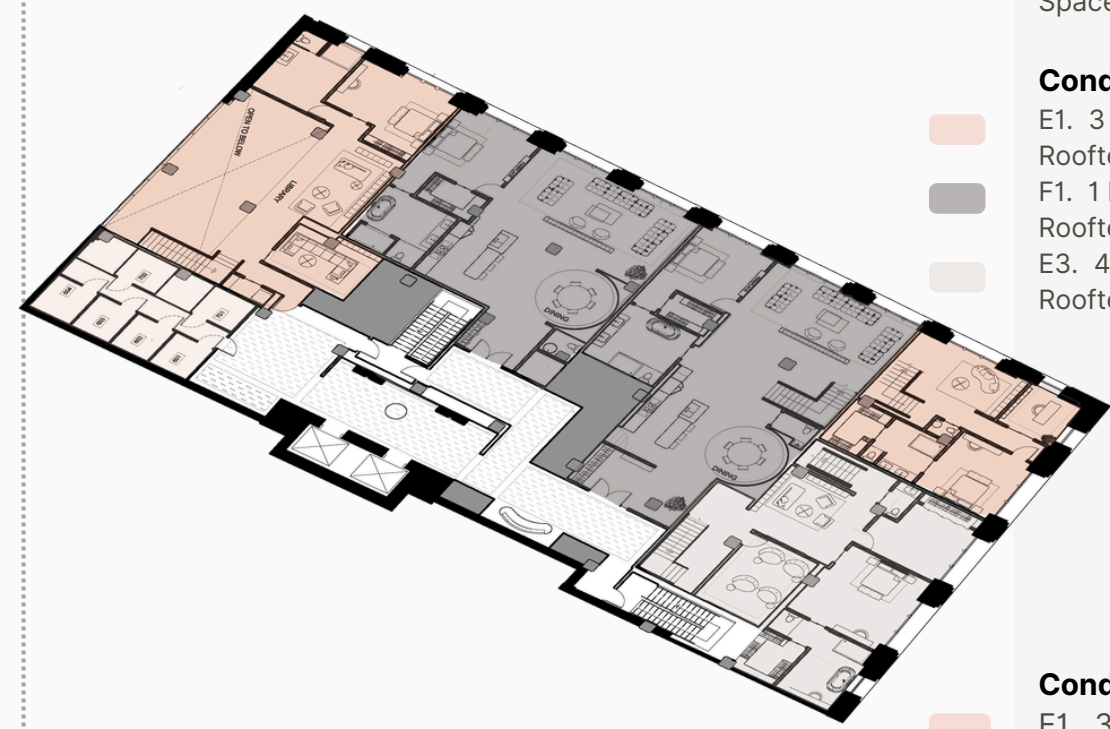
- Condo Units**
- D1. 3 Bedroom Condos (2)
- Facilities**
- C3. Wine Cellar - Floor 2/2
  - D3. Gym Facility
  - D4. Cold Plunge/ Sauna/ Steamroom Circuit

R



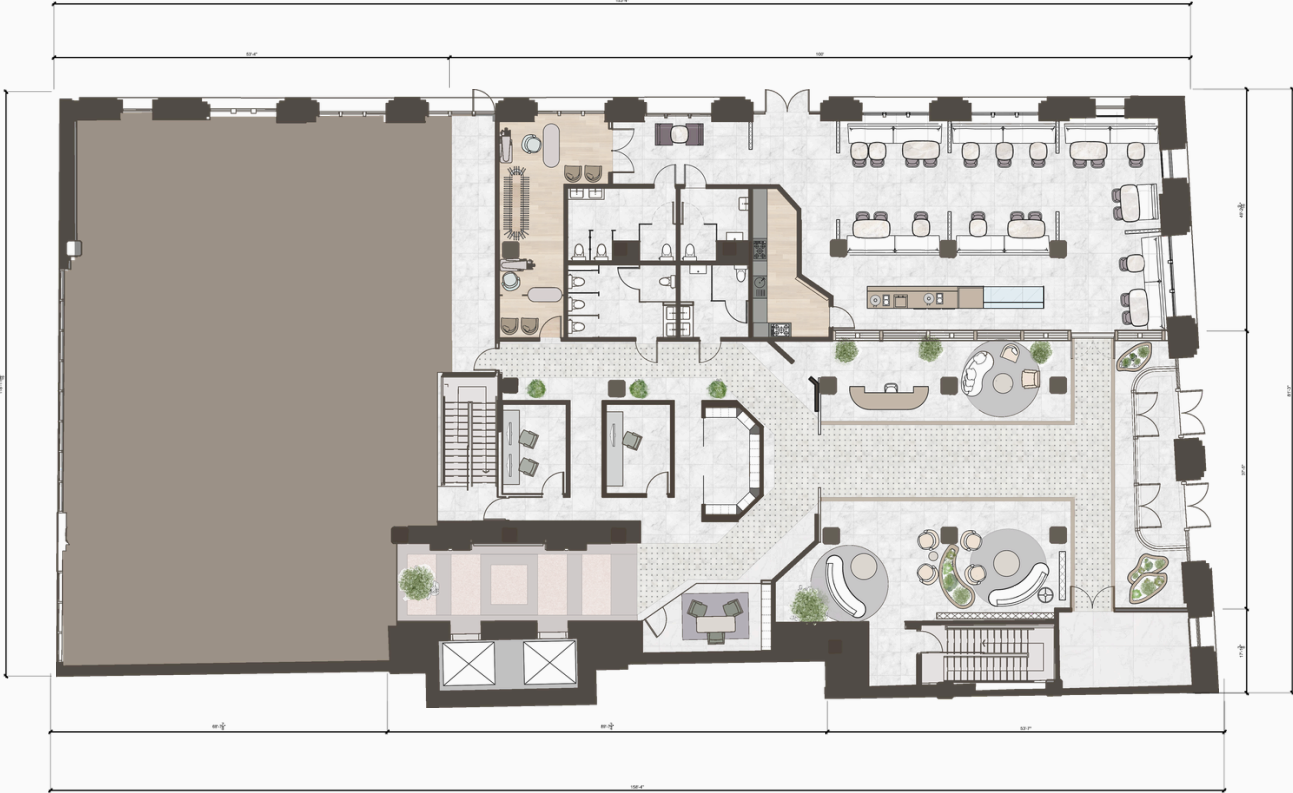
- Facilities**
- G1. Rooftop Terraces
  - G2. Rooftop Pool Facility
  - G3. Indoor Lounge Area
  - G4. Private Entertainment Spaces

7



- Condo Units**
- E1. 3 Bedroom Condo Unit - Rooftop Terrace - Floor 3/3 (2)
  - F1. 1 Bedroom Penthouse - Rooftop Terrace 2/2
  - E3. 4 Bedroom Penthouse Unit - Rooftop Terrace (3/3)

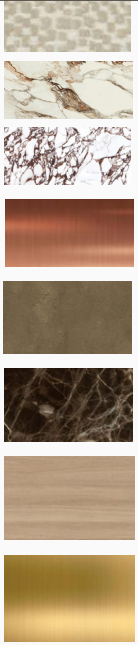
- Condo Units**
- E1. 3 Bedroom Condo Unit w/ Cinema Room - Floor 2/3 (2)
  - F1. 1 Bedroom Penthouse Unit (2)
  - E3. 4 Bedroom Penthouse Unit - Floor (2/3) (1)

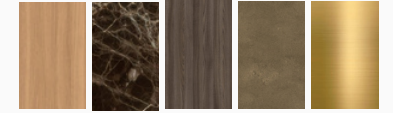


RESIDENTIAL LOBBY



RESIDENTIAL LOBBY





ELEVATOR LOBBY



RESIDENTIAL HALLWAY

As residents navigate the space, the goal is to maintain a cohesive, opulent-yet-natural color palette that flows seamlessly from the main lobby, through the elevator lobby, and down the hallway to each residence. To create a dynamic experience, however, we propose introducing a bold, darker palette in the elevator lobby—using the same materials—to establish a distinct atmosphere while preserving overall continuity.

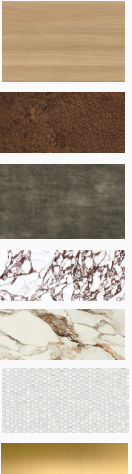


STANDARD LIVING ROOM



CONDO UNIT 202

Standard Unit  
1 Bedroom  
2<sup>nd</sup> / 3<sup>rd</sup> Floor  
2200 Sq FT



STANDARD BEDROOM

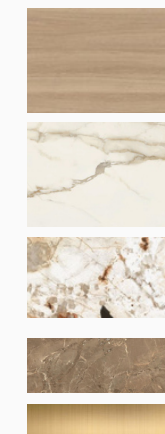


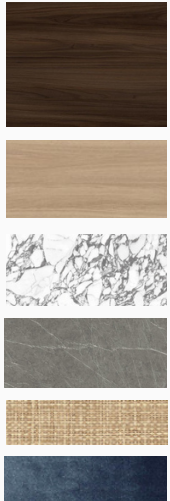


BATHROOM



BATHROOM

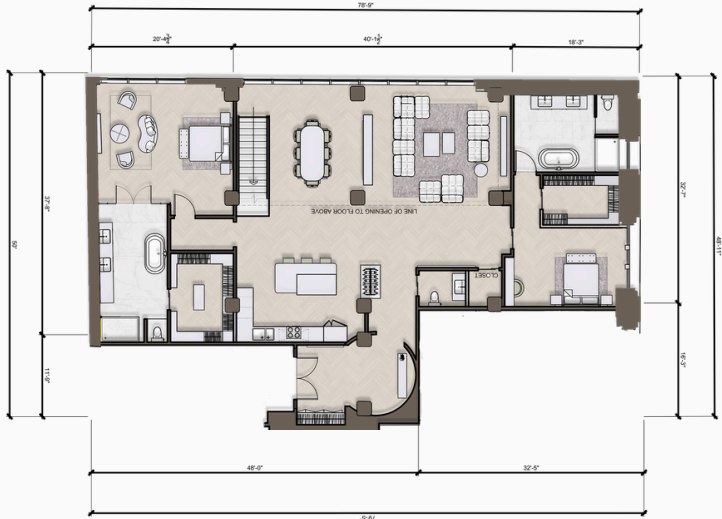
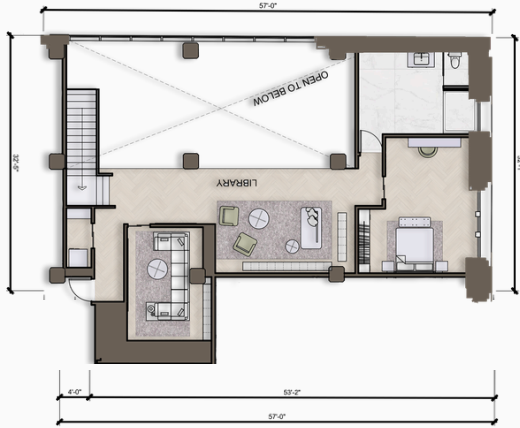




KITCHEN



DINING ROOM/ STAIRS



# PENTHOUSE UNIT 604

Penthouse Unit

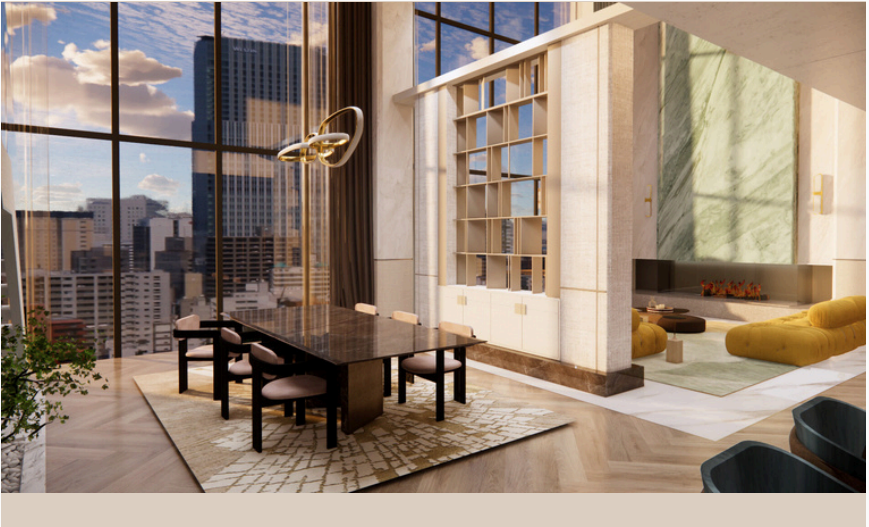
4 Bedroom

6th and 7th Floor

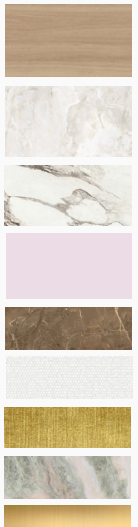
3700 Sq FT



ENTRANCE

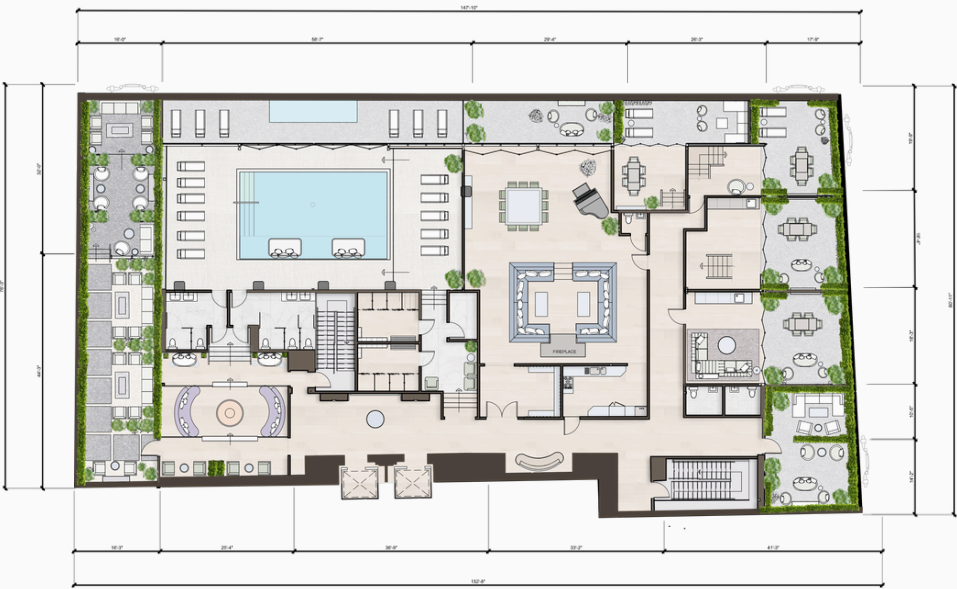


DINING/LIVING ROOM VIEW





ROOFTOP POOL



THE  
**MIRAGE**  
 RESIDENCIES



OUTDOOR TERRACE SPACE



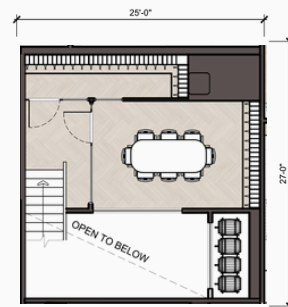
OUTDOOR TERRACE SPACE



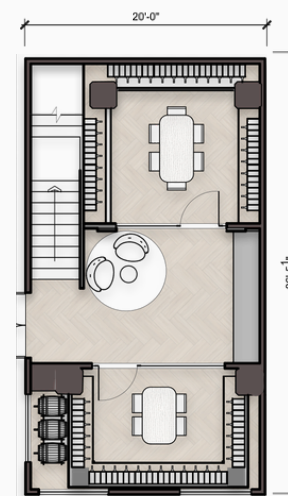
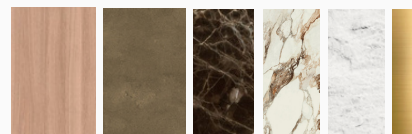
WINE CELLAR



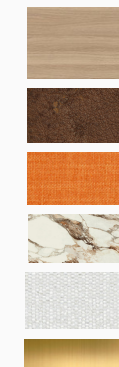
CAFE/BISTRO



5TH FLOOR  
375 Sq Ft



4TH FLOOR  
725 Sq Ft



CAFE/BISTRO



# 02

## AGORA LAW FIRM OFFICE PROJECT



An International Law Firm well known for their extensive library.

With roots from Mexico City, Agora Law Firm brings over 80 years of legal expertise, spanning three generations of distinguished lawyers. Recognized as one of the most prominent law firms in Mexico, it has established a strong international presence and a global network of partners.

The firm specializes in the principles and regulations that govern relations between nations, between states and individuals, and among international organizations. Agora is committed to fostering a culture of community, collaboration, cultural diversity, and innovation—all grounded in unwavering ethical standards.

### Design Approach

The firm houses one of the most comprehensive law book collections in Mexico. Now expanding to Montreal, our goal is to introduce finishes and an aesthetic that reflect the cultural essence of Oaxaca; the Mexican region where Agora's founding lawyers originate—while maintaining a clean, professional design approach, and reinventing their notorious library. Unlike the often cold and impersonal atmosphere of traditional law firms, we aim to create a warm, welcoming environment that challenges the conventional perception of legal spaces.





RECEPTION SEATING AREA

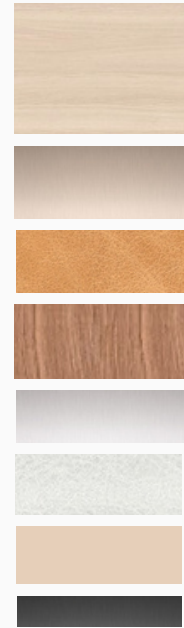


OPEN OFFICE AREA



LIBRARY





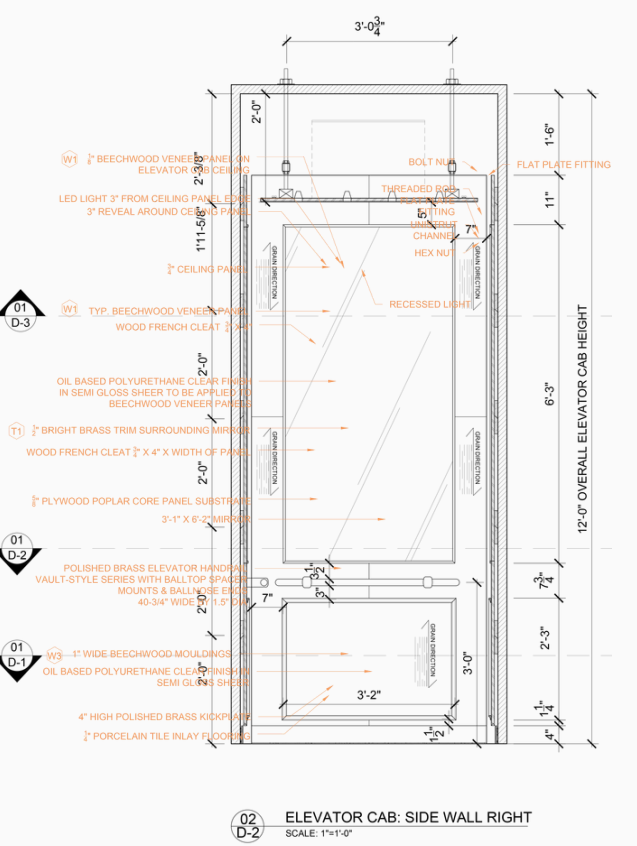
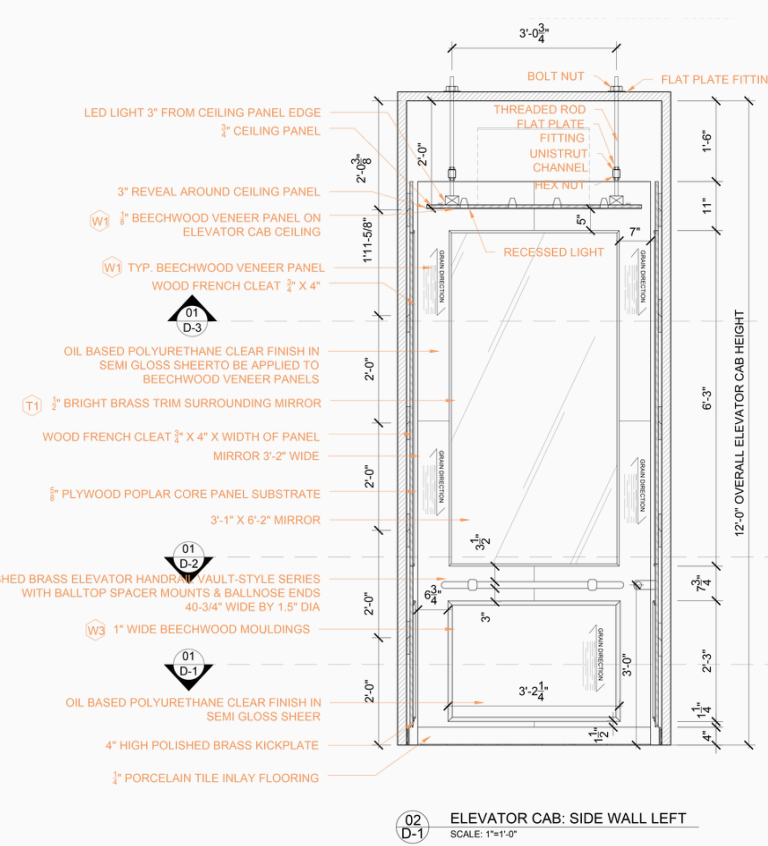
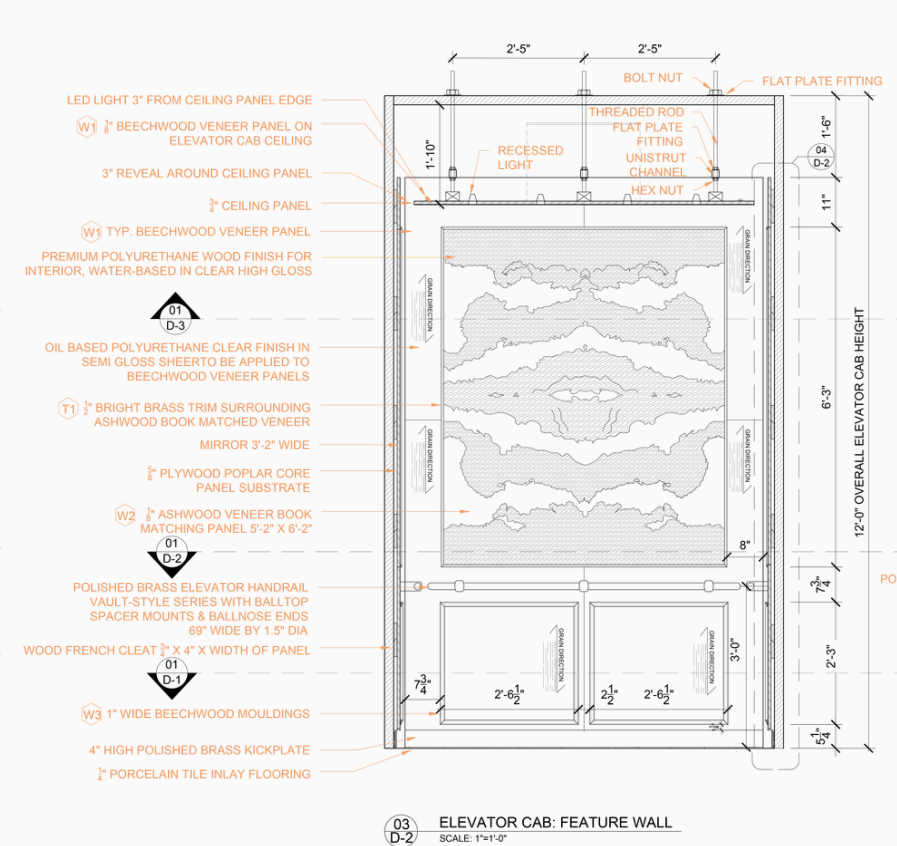
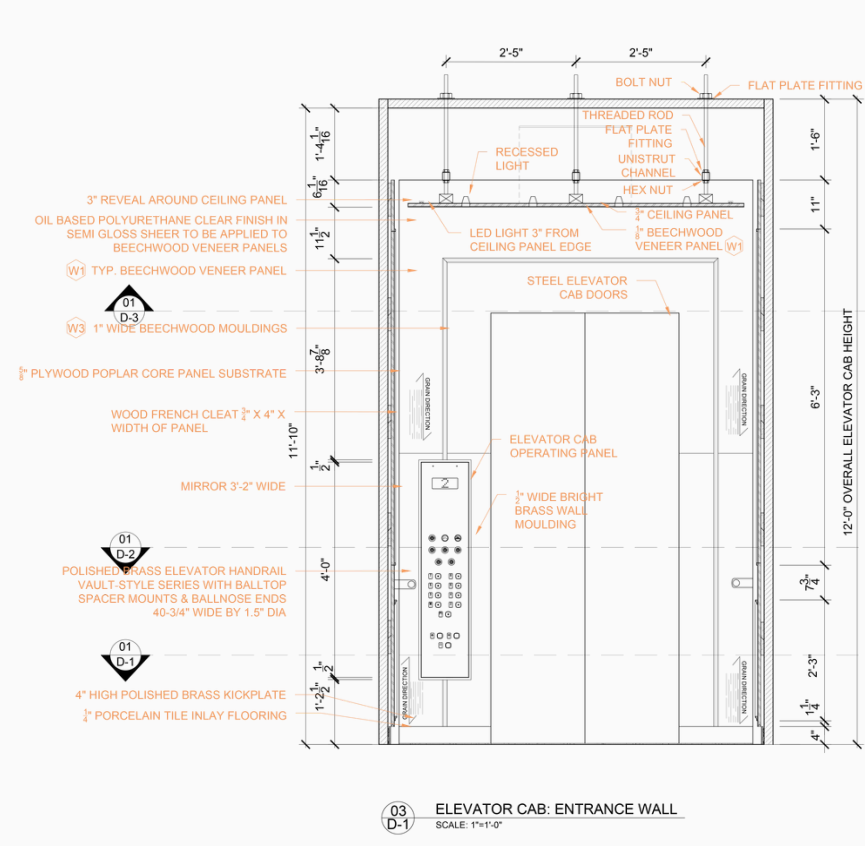
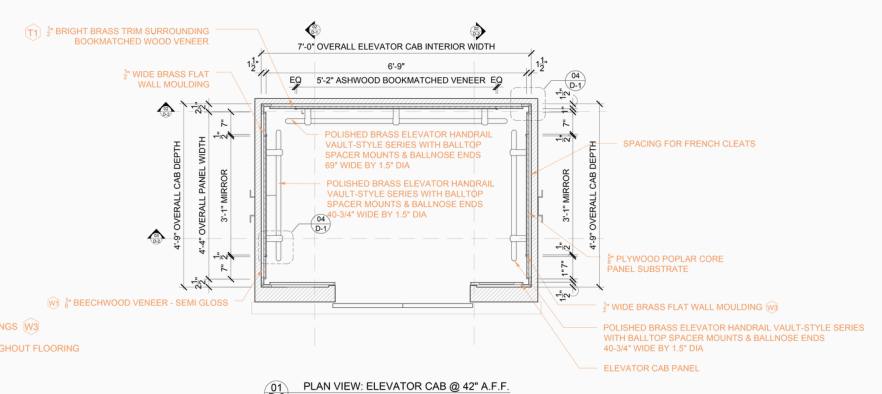
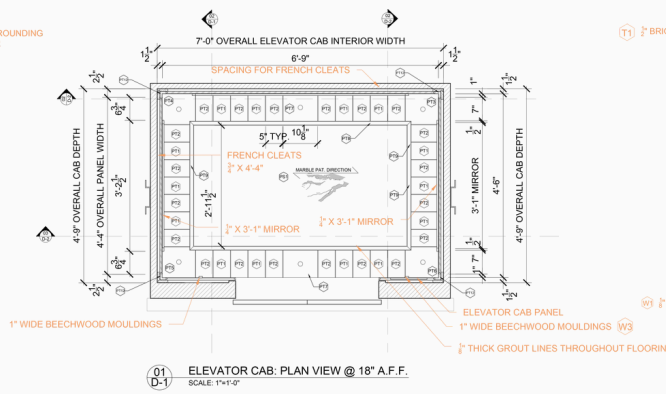
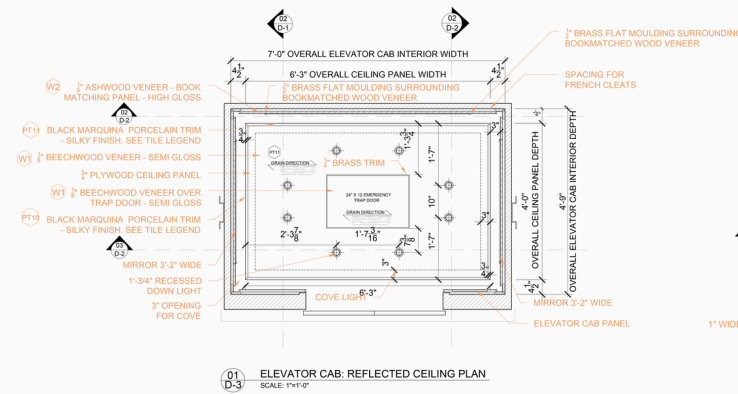
BOARDROOM

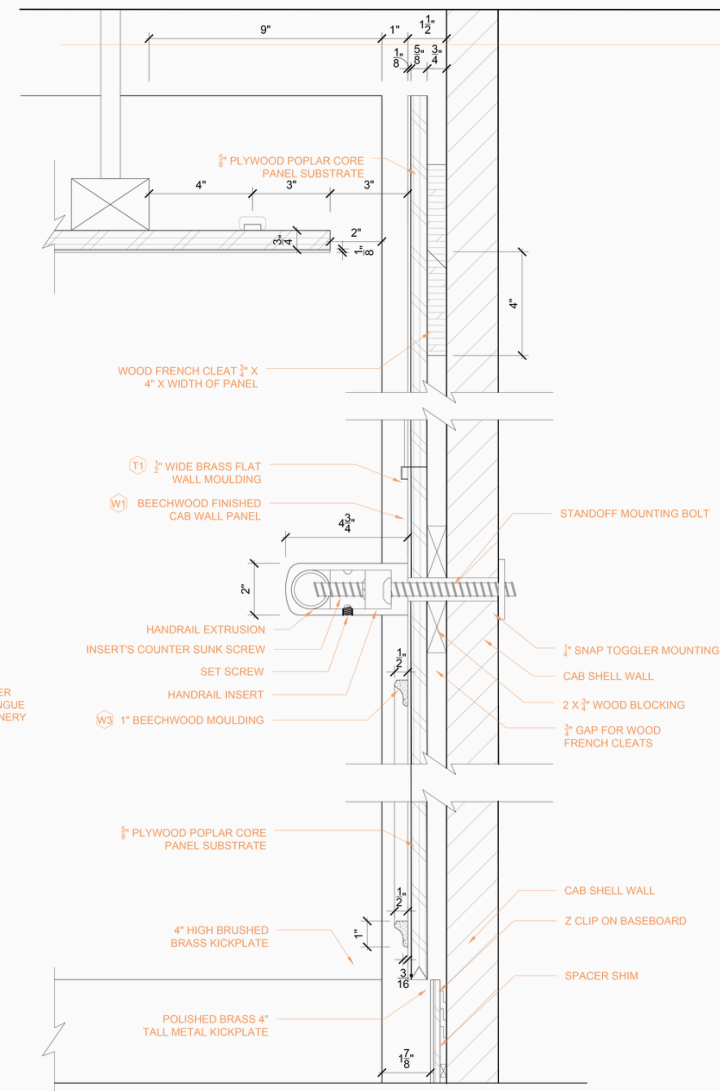
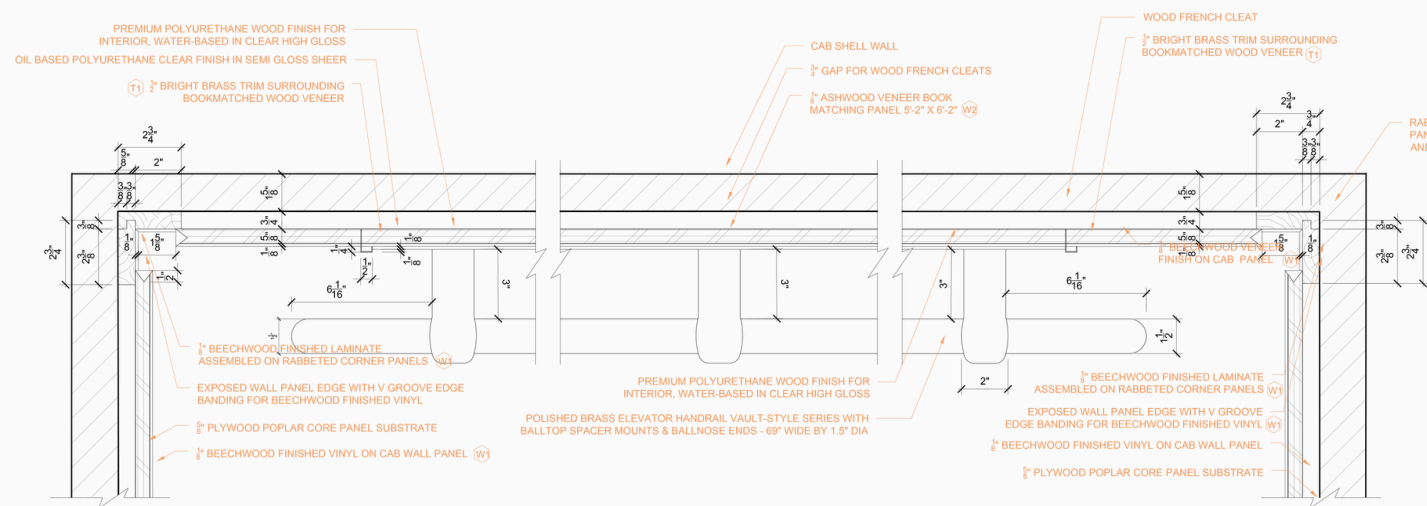


BREAK ROOM

03

ELEVATOR CAB TECHNICAL DRAWINGS

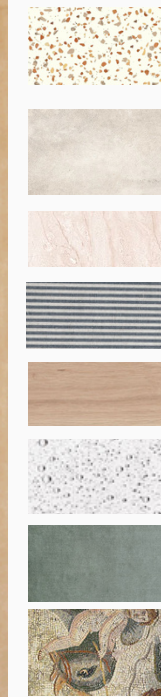




ELEVATOR CAB RENDER

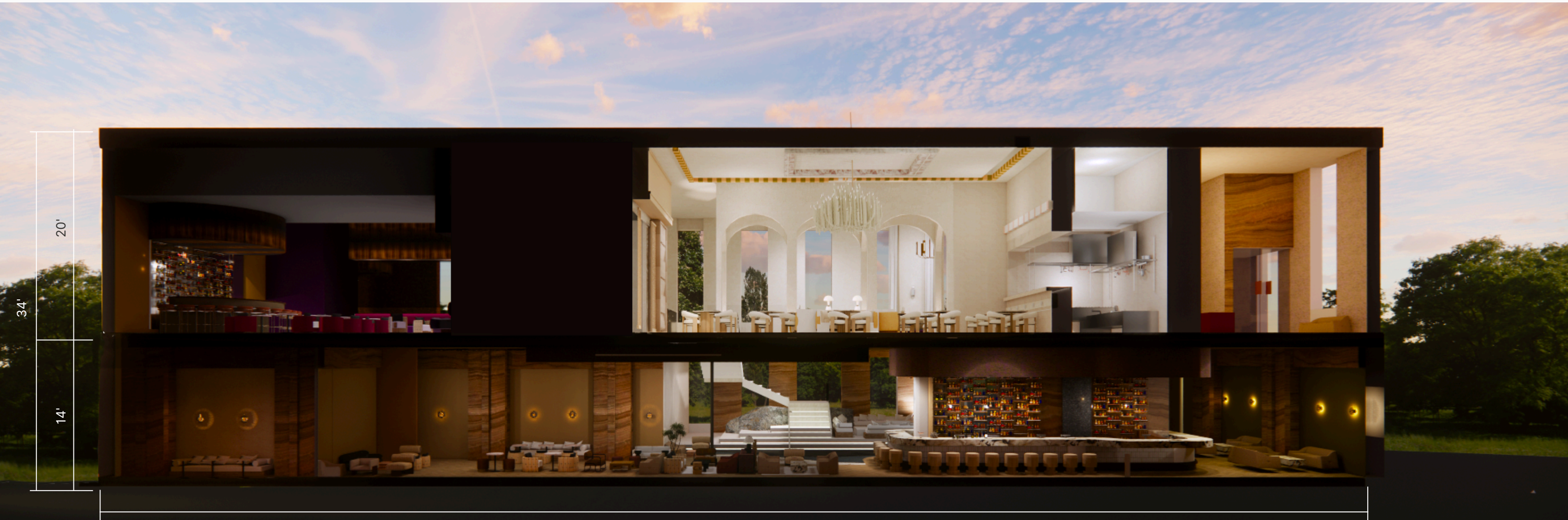
# 04

## NEPTUNES VEIL RECREATIONAL PROJECT



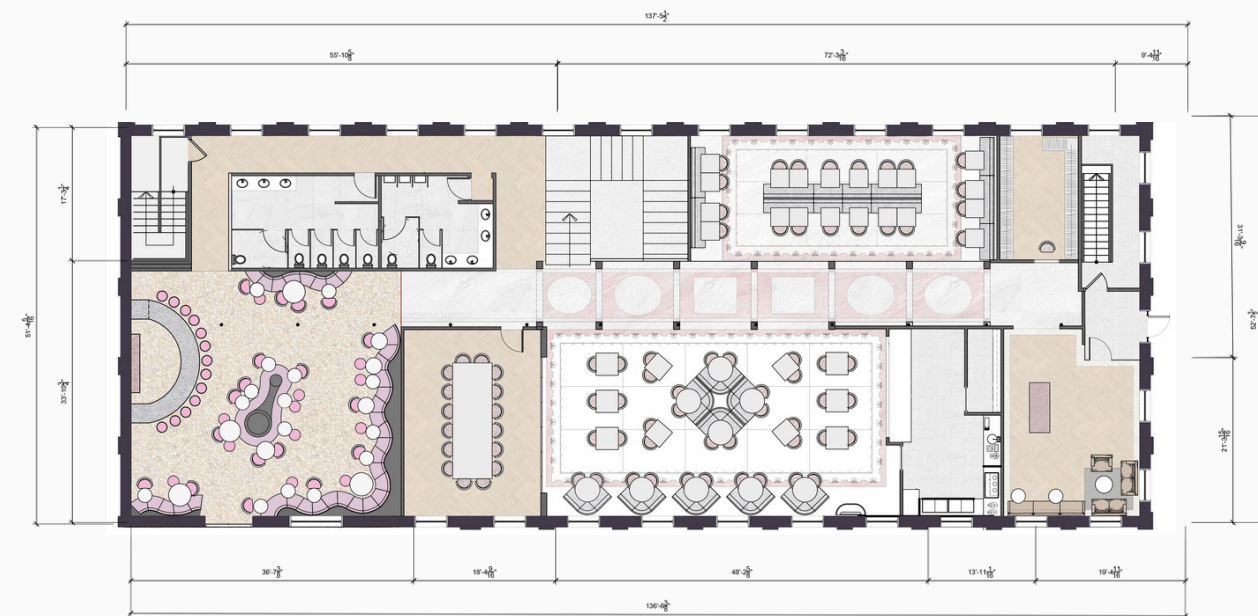
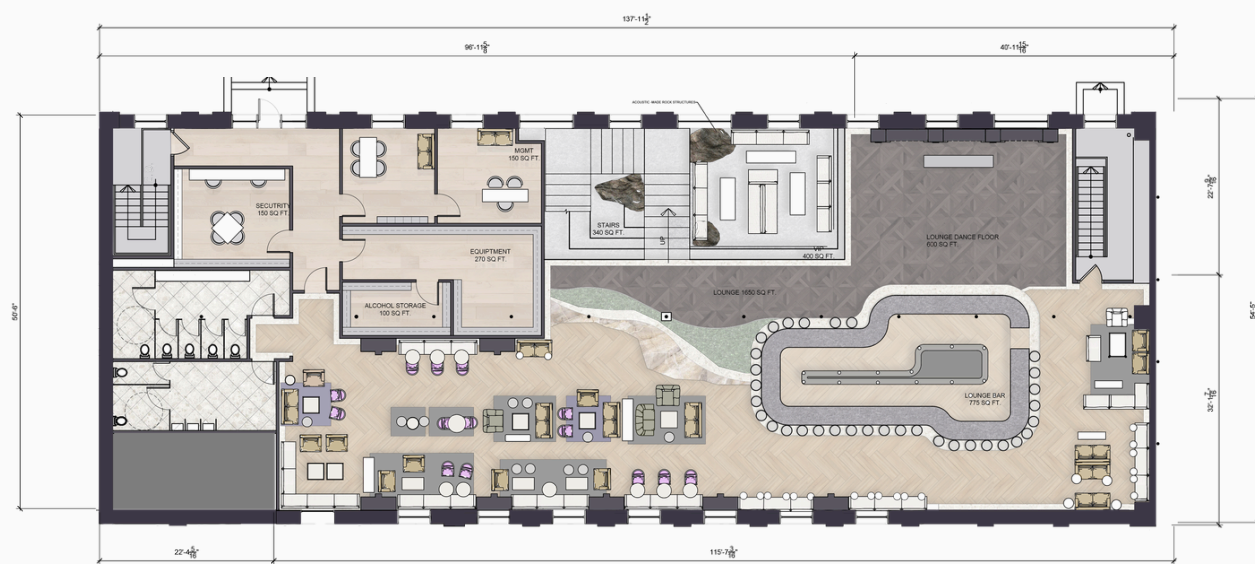
A two floor recreational social spot with a lounge on the first floor & a restaurant & speakeasy on the second floor.

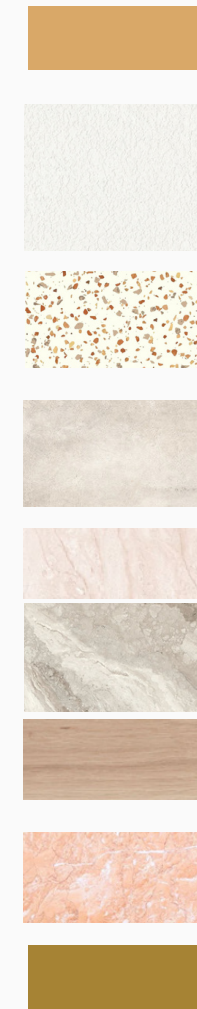
Our mission is to create a restaurant & Cocktail Lounge experience that transports guests to a dreamlike escape—where it feels as though they’ve gathered seaside treasures and stepped inside a sandcastle. Through this distinctive design approach, guests will be immersed in a sense of leisure while enjoying high-end dining, and curated cocktails, to vibrant music in what is set to become a staple of Montreal’s social scene.



137' 11-1/2"

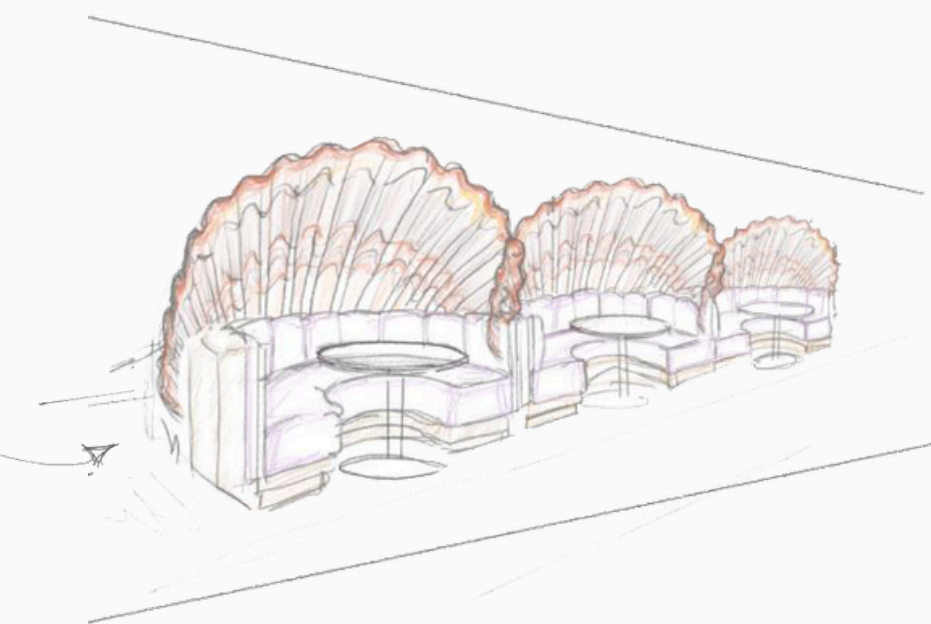
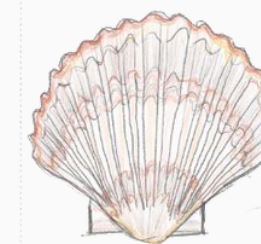
SECTION ELEVATION





DINING HALL 1

The arched silhouette of a clamshell creates a flattering profile that gently embraces rounded booths, while also allowing for the integration of cove lighting that emanates from the central base—casting a soft, ambient glow for evening settings.





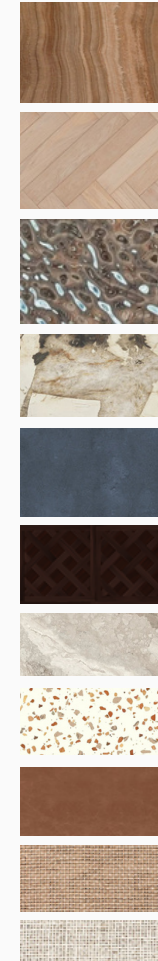
DINING HALL 2



ARCHED HALLWAY

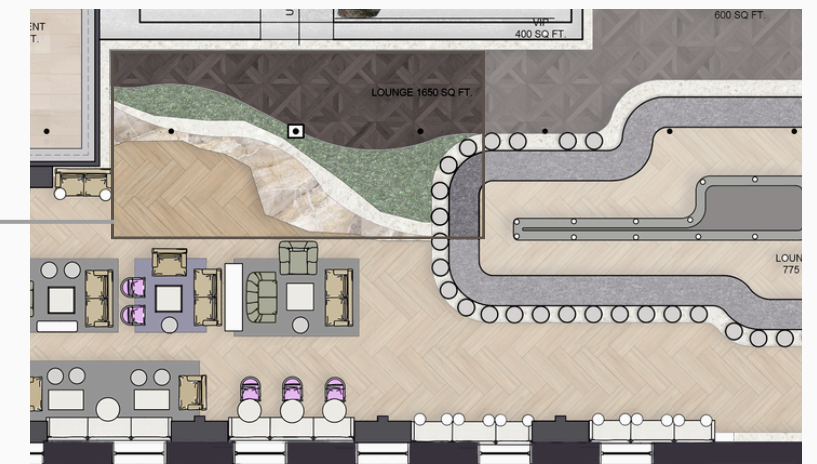


- 1. Custom Dining chair (indicate commercial grade material)
- 2. Magnus Round Sintered Stone Dining Table
- 3. Custom upholstered booth in Navy Pinstripe and Muted Blue
- 4. Wood Block Totem by Joel Escalando
- 5. Pierre lamp Kimmie Taylor
- 6. Carson Chandelier
- 7. Cylinder Shell Sconce
- 8. Custom Shell Sconce



LOUNGE BAR

The transitions in floor materials are designed to evoke the ebb and flow of a shoreline tide. Guests on the dance floor or ordering drinks will appear as if they're emerging from the ocean and returning to sand as they make their way back to the lounge seating—subtly reinforcing the coastal narrative through movement and materiality.

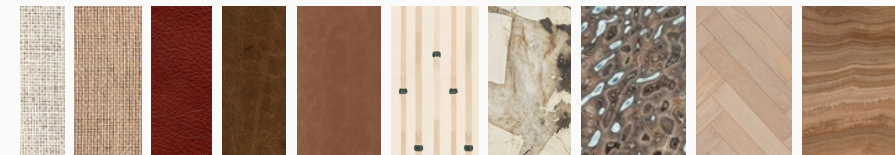




PRIVATE SEATING AREA



LOUNGE SEATING AREA

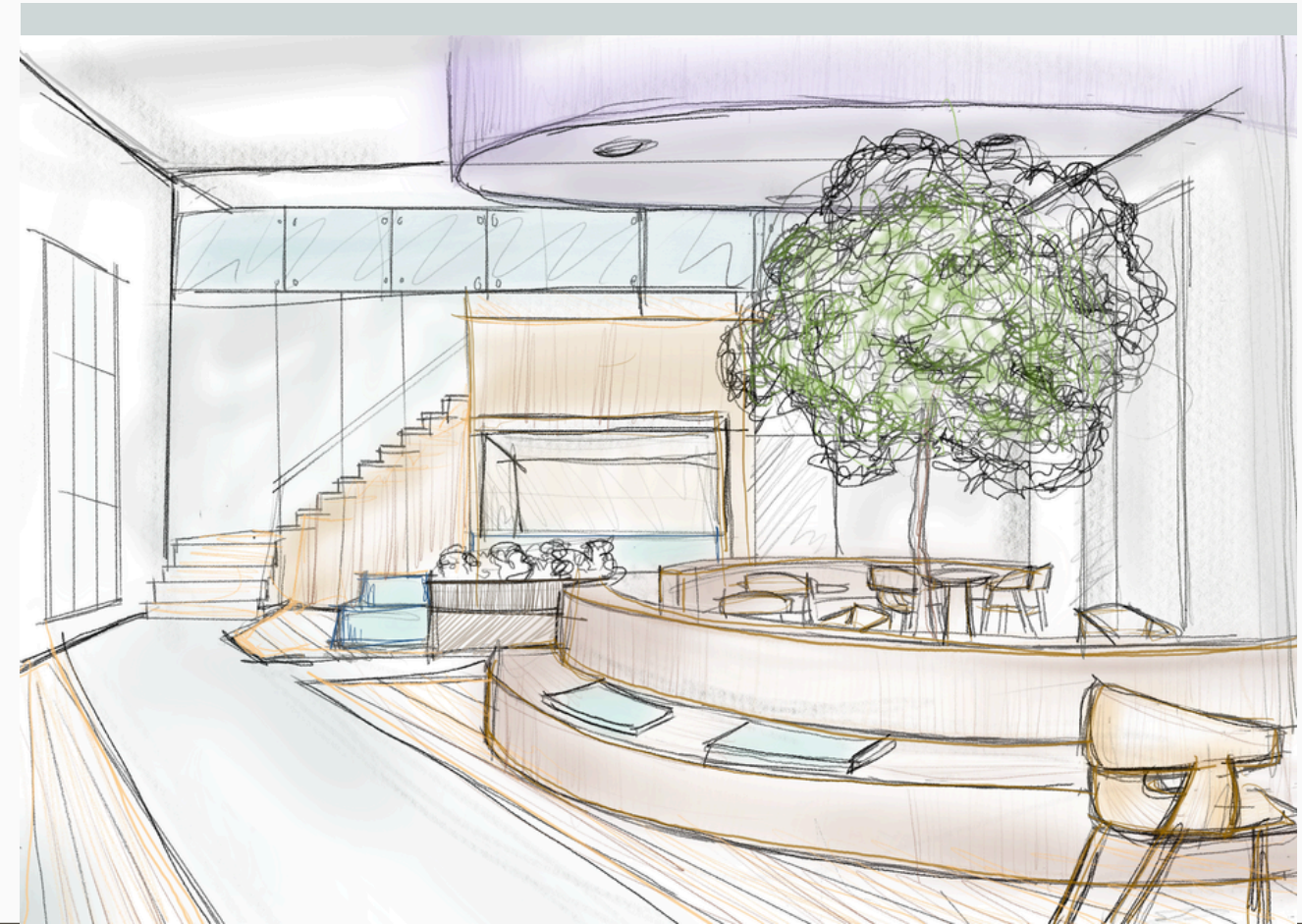


1. Calacatta Bistro Table le redoute
2. Swivel Arm chair with custom upholstrey
3. Gum Armchair Cliff Sofa by Modloft
4. Ring Modern Wood Sideboard
5. Custom designed Bar Stool - by Savannah White
6. Wood Block Totem by Joel Escalando
7. Marara Chair - Indonesian Imported
8. Studio Enyo Coffee Table Ebony Wood
9. Aimantas Leather upholstered Armchair
10. Remmey Round Velvet Ottoman
11. Morro Side Table KW
12. Custom Patagonia stone laminated Coffee table
13. Modern swivel Credenza



# 05

## COMMUNITY CENTER



A community center sprint design that is dedicated to showcasing the planning of a non-profit organization.

A community center sprint design that fosters a diverse environment aimed at bridging the gap between different ages and promoting the advantages of engaging in an inclusive age friendly community. The goal of the facility is to provide social support, help individuals find a sense of self and belonging in their community, and offer opportunities for volunteer involvement.

### Design Goals

- Design a socially dynamic & optimal space that encourages social interaction, and inclusion for all ages.
- A warm & positive environment that isn't too loud or overbearing for seniors.
- Design with seniors or people with disabilities taken into consideration. (Accessibility & Ramps if required.)

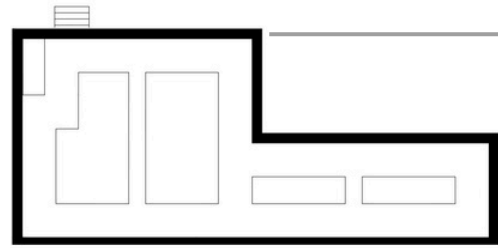


### Youth

- Problematic Home Environment
- Victims of Substance Abuse
- People who experience social isolation
- Mental Health: Anxiety, Depression, and Stress
- Educational Challenges

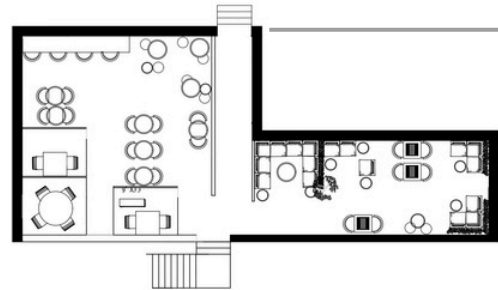
### Seniors

- Seniors without Family
- Victims of Substance Abuse
- People who experience isolation
- Seniors struggling with Mental Health.



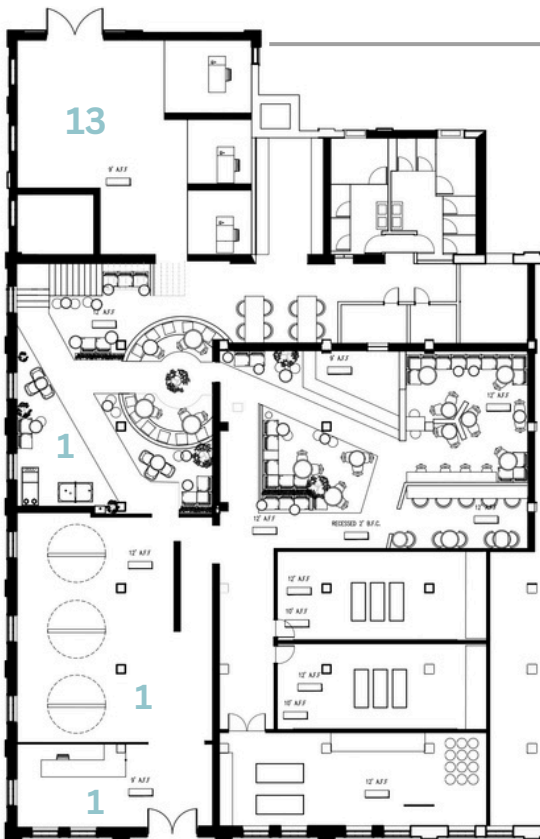
ROOFTOP

13 - ROOFTOP GARDEN - 6.3%



MEZZANINE

10 - QUIET WORKSPACE - 2.5%  
11 - LOUNGE AREA 2 - 2%  
13 - ROOFTOP GARDEN - 6.3%



GROUND FLOOR

1 - RECEPTION - 5%  
2 - YOGA STUDIO - 9.9%  
3 - CAFE - 1.7%  
4 - LOUNGE AREA - 18.8%  
5 - ART STUDIO - 6.9%  
6 - LOCKERS - 1.7%  
7 - BATHROOMS - 5.1%  
8 - OPEN WORK SEATING - 3.6%  
9 - ART GALLERY - 11.3%  
10 - QUIET WORKSPACE - 2.5%  
12 - ROOFTOP GARDEN - 6.3%

BOH:  
13 - COMMUNITY DIRECTOR  
13 - ACCOUNTING - 1.1%  
13 - FACILITIES MANAGER - 1.1%  
13 - IT - 1.1%  
13 - SOCIAL EVENTS CORD. - 1.1%  
14 - SERVER ROOM - 0.8%

F.F.E.

- 1- Anise Green Tea Fabric Dining Chair By English Elm
- 2- Small Round office Table By Workplace Depot
- 3- Draft Dining Room Table in Beech By Nordic Nest
- 4- Ellemia Modular Sofa in Custom Upholstery By Mobilia
- 5- Buzzispace 3D Pouf in Jade and Grey-Blue By Buzzispace

LIGHTING

- 1 - 6 ft Flush light mount
- 2- Pendant Accord Barril Light (Large)
- 3- Pendant Accord Barril Light (Medium)
- 4 - Aston Flush Mount
- 5- Recessed Drum Just Flush Mount Light
- 6 - Zerus 37 mm recessed light
- 7 - Linearity Chandelier - Artisan Glass
- 8- Spot on multi Track light - Black Finish
- 9- Trentino Wall Sconce

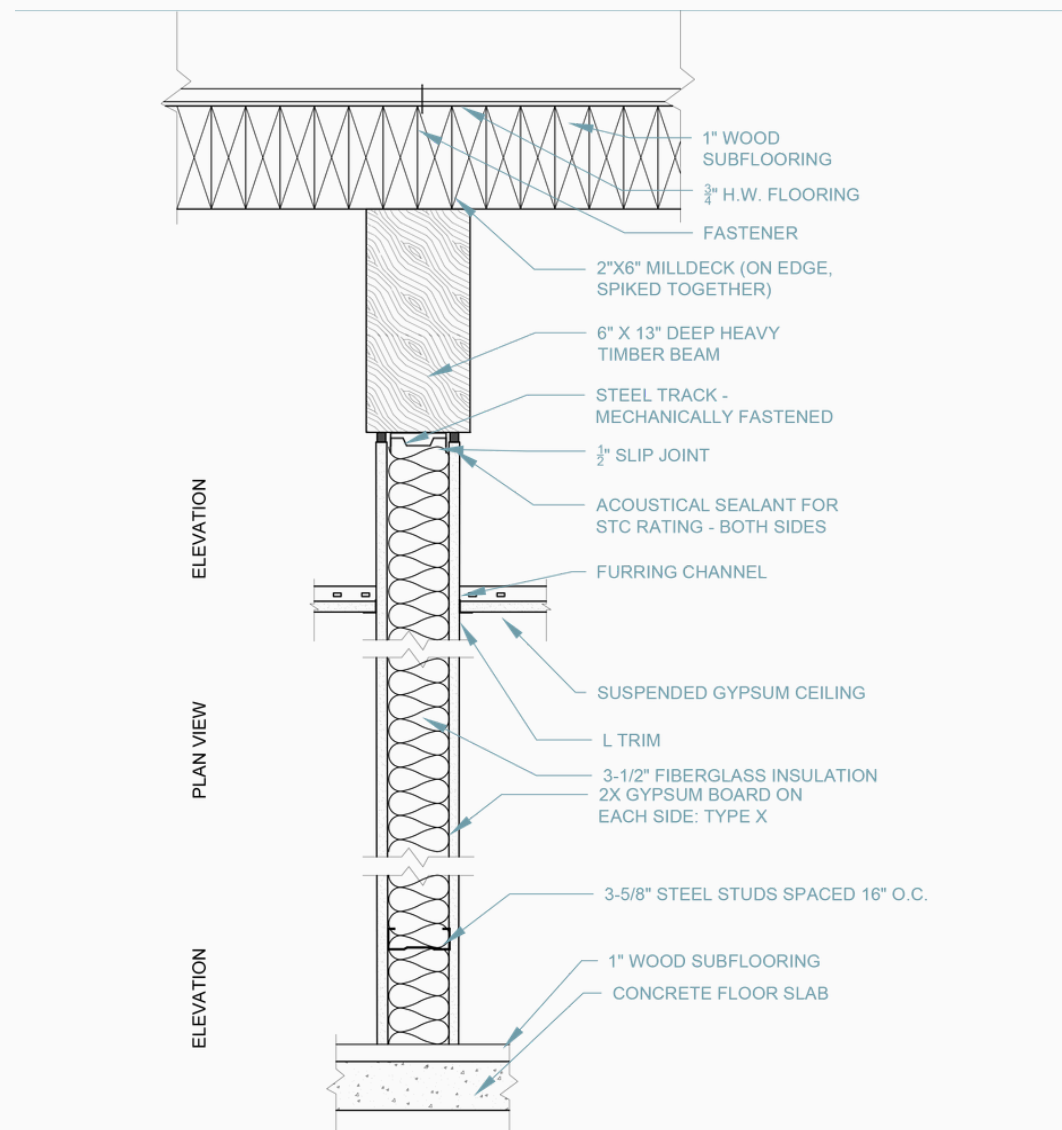


LOUNGE SEATING AREA

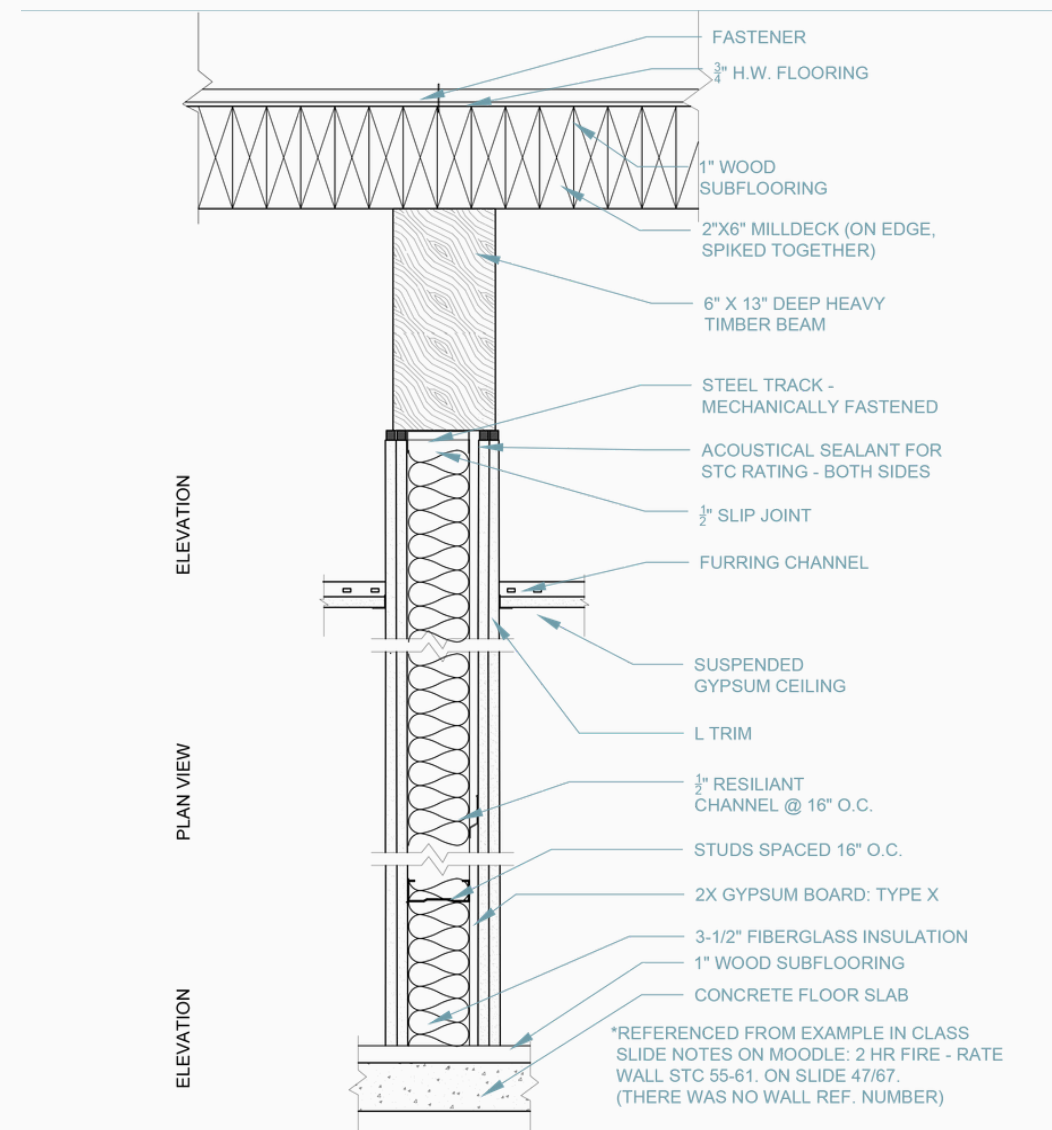


# 08

## WALL TYPES & THEIR STC RATING

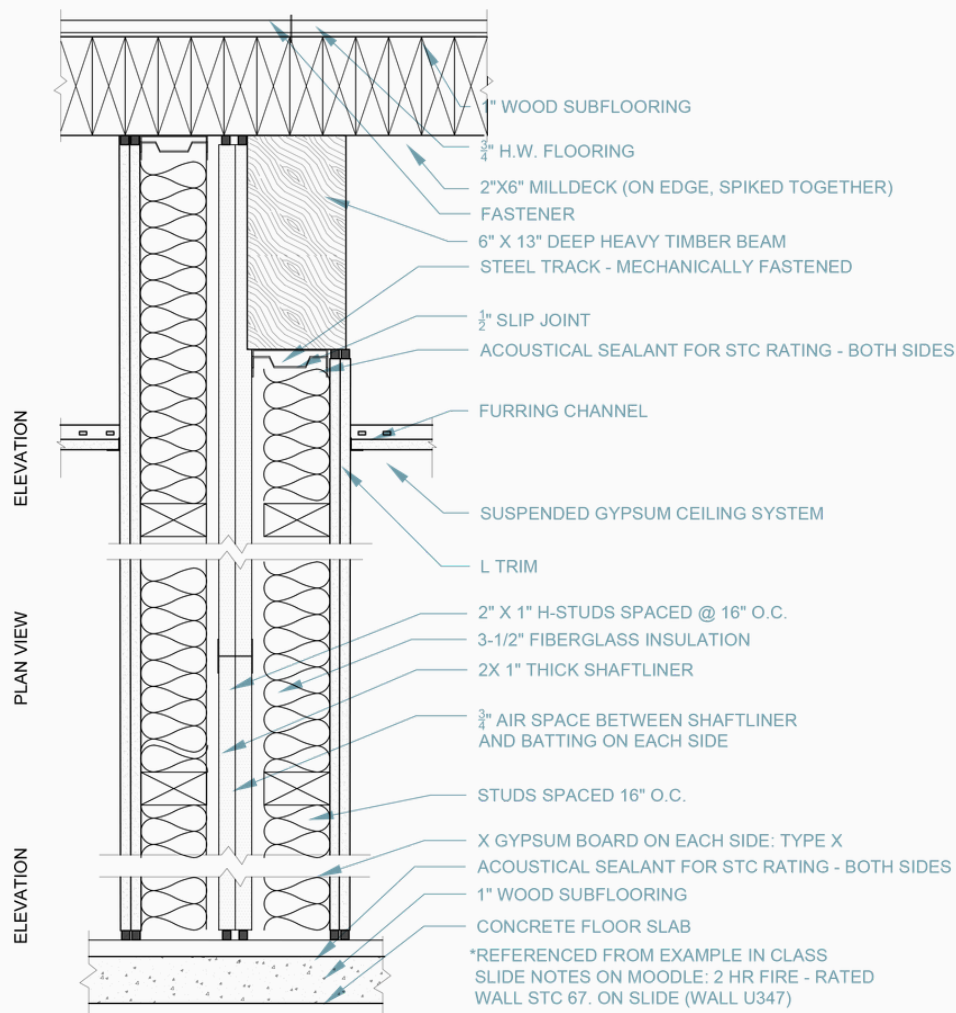


**01** WALL TYPE 1: 1 HR FIRE RATED WALL STC 60  
 D-2 SCALE: 1-1/2"=1'-0"

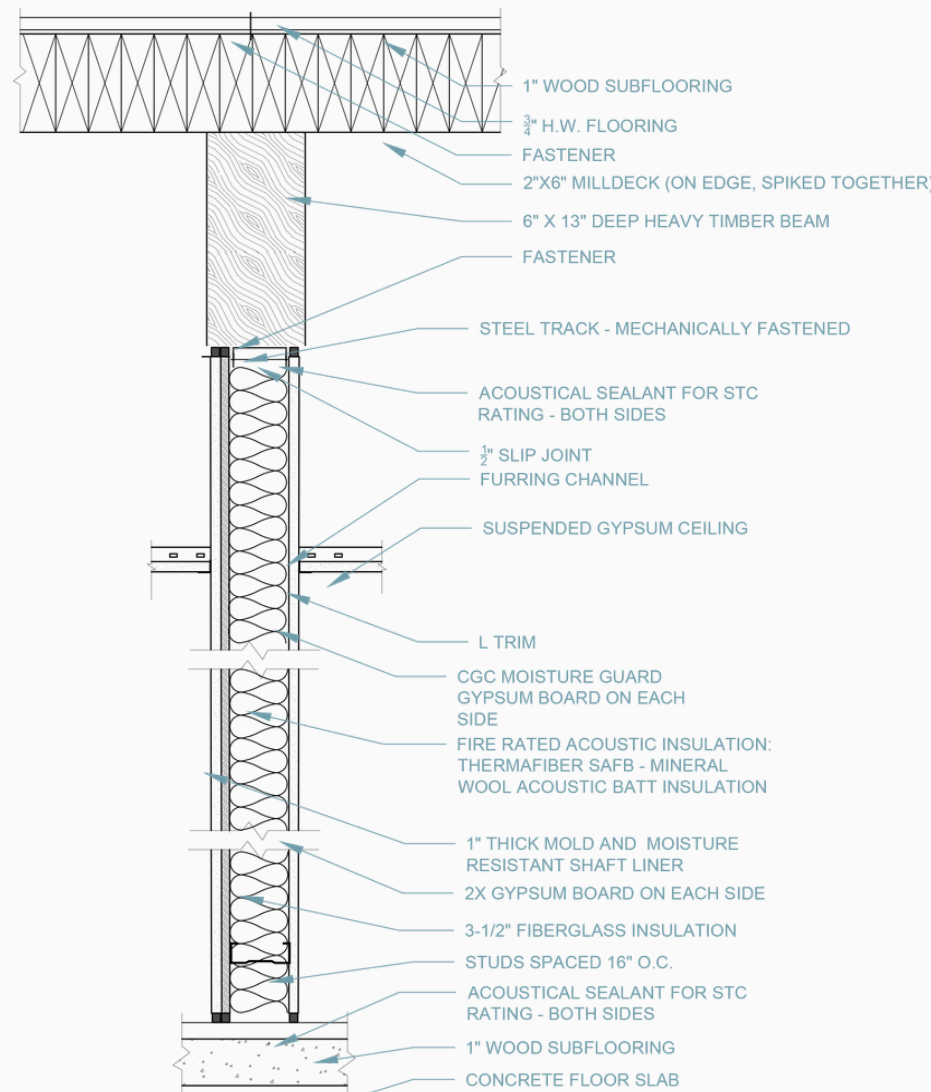


**02** WALL TYPE 2: 2 HR FIRE RATED WALL STC 60  
 D-2 SCALE: 1-1/2"=1'-0"

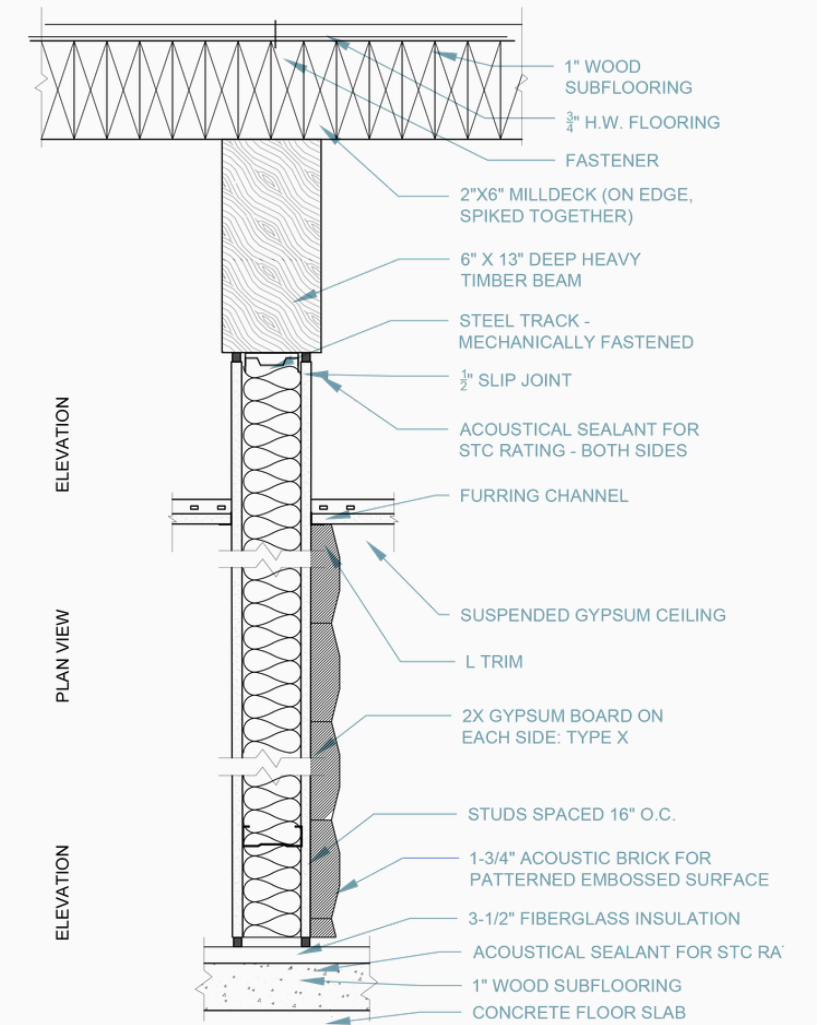
\*REFERENCED FROM EXAMPLE IN CLASS SLIDE NOTES ON MOODLE: 2 HR FIRE - RATE WALL STC 55-61. ON SLIDE 47/67. (THERE WAS NO WALL REF. NUMBER)



01 WALL TYPE 3: HIGH ACOUSTIC WALL STC: 67  
D-3 SCALE: 1-1/2"=1'-0"



01 WALL TYPE 5: DAMP PROOF WALL ASSEMBLY STC: 60  
D-4 SCALE: 1-1/2"=1'-0"



02 WALL TYPE 6: DECORATIVE ACOUSTIC WALL STC: 63  
D-4 SCALE: 1-1/2"=1'-0"

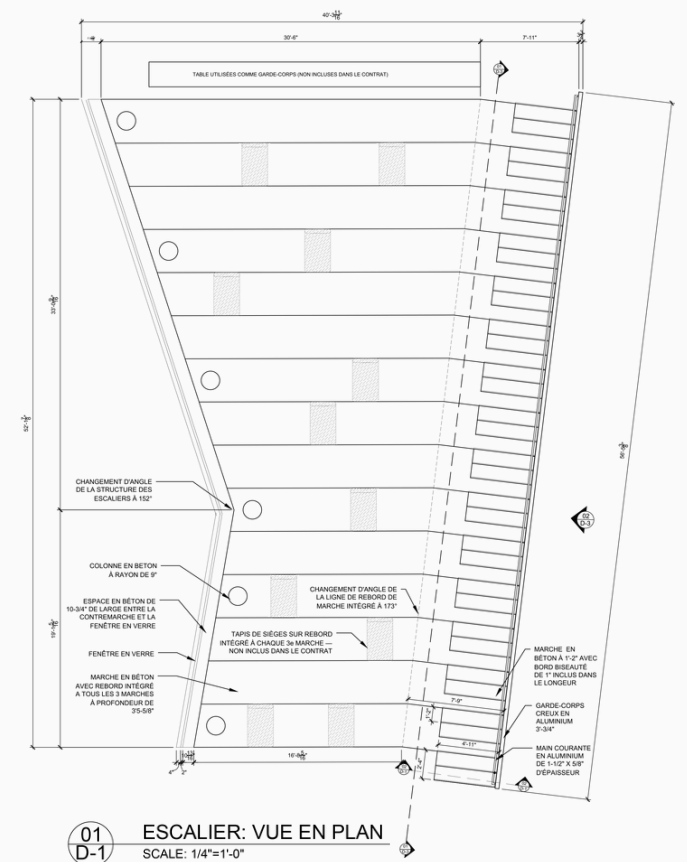
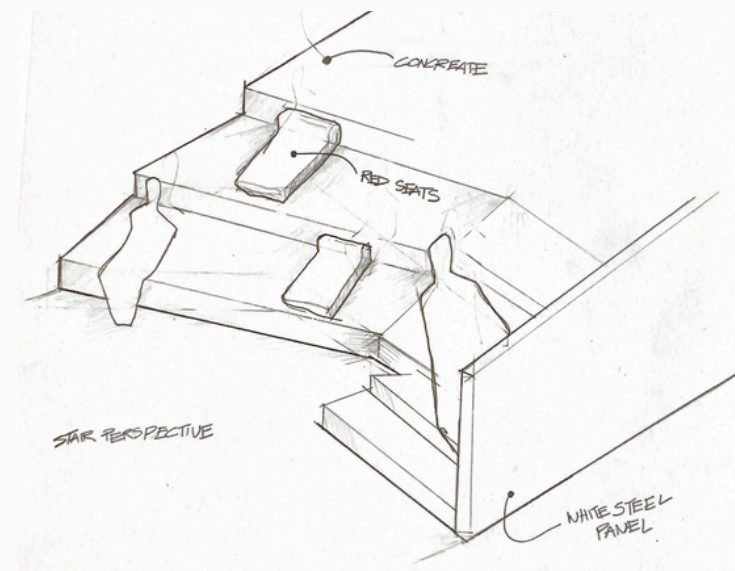
# 06

## ETS STAIRS TECHNICAL DRAWINGS

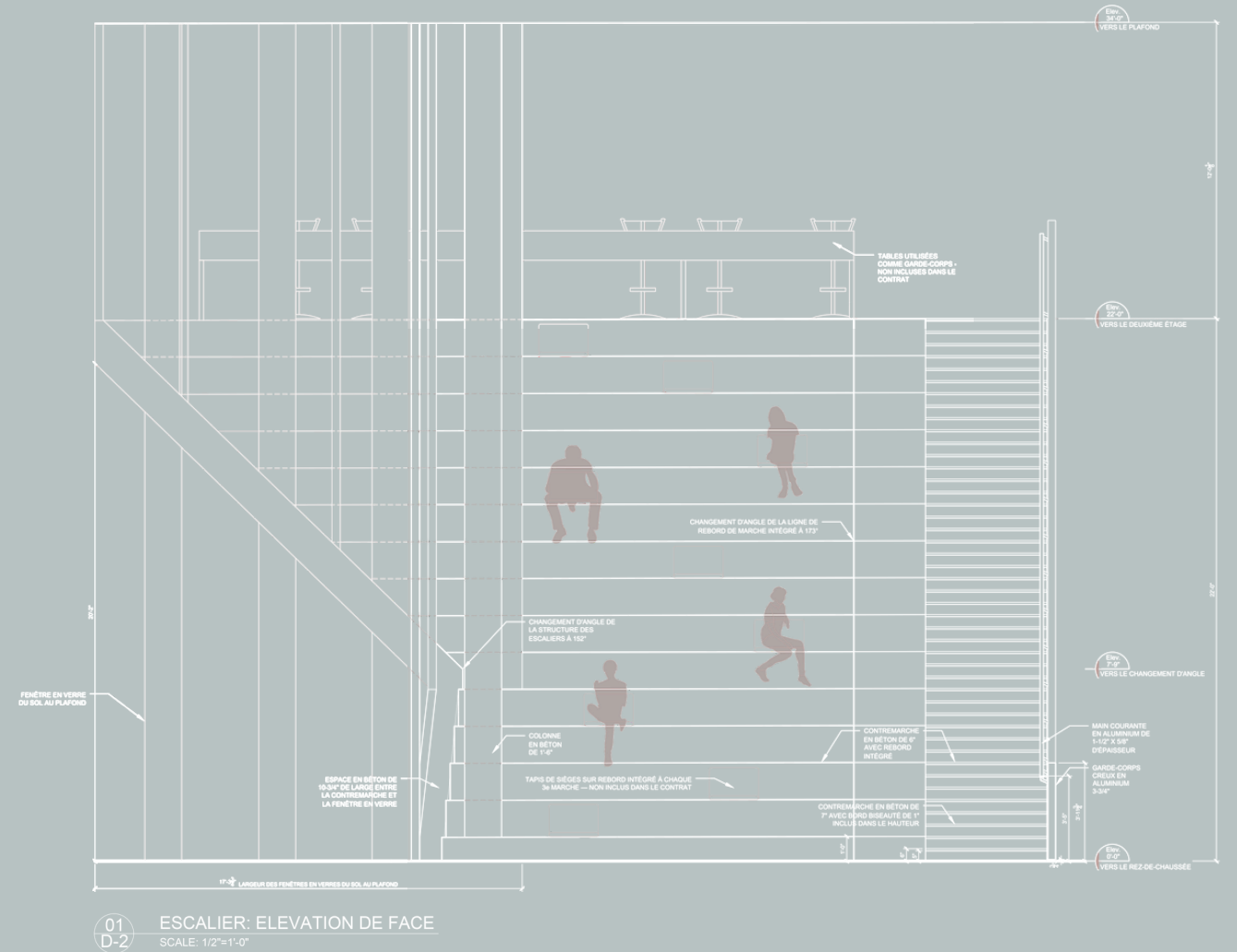


sum dolor sit amet, consectetur adipiscing elit. Vestibulum egestas urna nec.

We visited the stairs located between the main pavilion and the student residences, at the ETS Engineering school in downtown Montreal. The stairs was designed by MSDL Architects. Both the stairs and the building were said to be inspired by an ice house- or a block of ice meant to be purposed as an occupied structure. The buildings appearance is light and airy, while the building and the stairs embody the inserts and projections seen on ice surfaces. Custom made integrated cushion-nooks can be moved around on the larger half of the stairs for students to relax, study, or socialize.



Every three steps seen on the right hand side; equates to one large stair step seen on the left side. The stairs also isn't seen directly face-on or at a 45° degree angle like most stairs are. The staircase had a slight offset of 7°, which was unidentifiable to the human eye.



Also, for every three steps seen on the right hand side; equates to one large stair step seen on the left side. The stairs also isn't seen directly face-on or at a 45° degree angle like most stairs are. The staircase had a slight offset of 7°, which was unidentifiable to the human eye.

